



BOULDIN COURT AT 900

TH-B

Features

- ▶ 10' Ground Floor Ceiling Height
- ▶ 2-Story Vaulted Living Room
- ▶ Kitchen Options
- ▶ Walk-in master bedroom closet
- ▶ Master Outfitted with California Closets
- ▶ 3rd Floor Balcony
- ▶ End Unit



3 beds

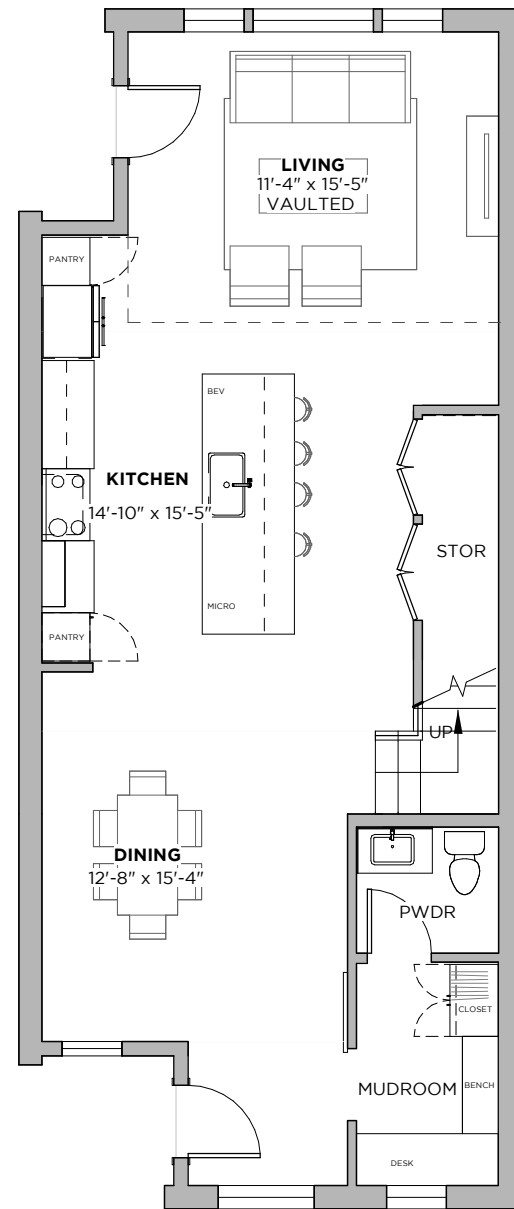


2.5 baths

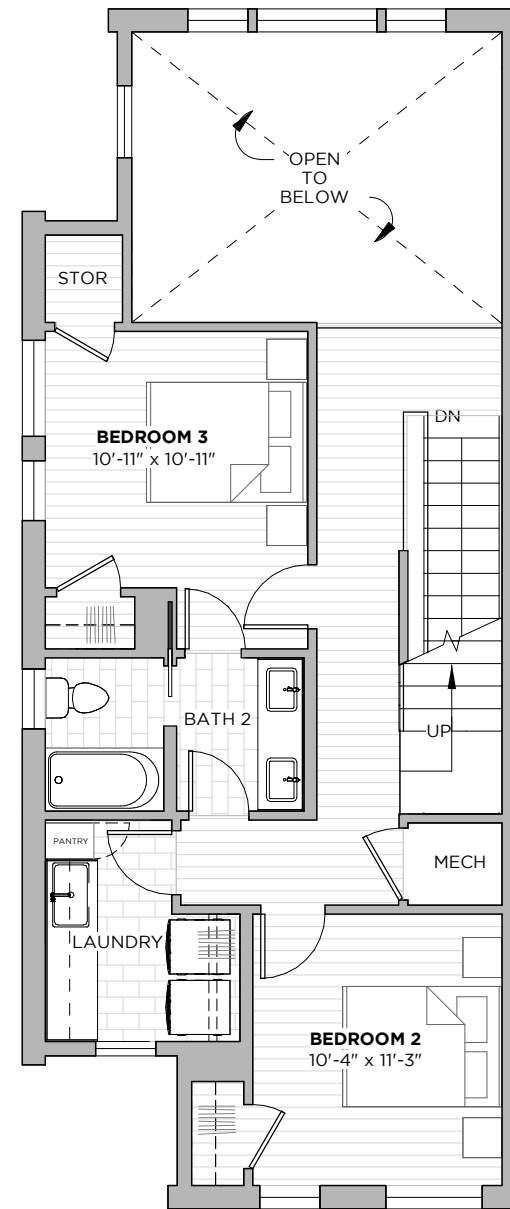


2444 SF

DECK/PATIO INFORMATION AVAILABLE PER UNIT



FIRST FLOOR



SECOND FLOOR



THIRD FLOOR



900 S. 2nd Street
Austin, TX 78704

512-201-2700

