



# BOULDIN COURT AT 900

## TH-A4

### Features

- ▶ 10' Ground Floor Ceiling Height
- ▶ Kitchen Options
- ▶ Walk-in master bedroom closet
- ▶ Master Outfitted with California Closets
- ▶ 3rd Floor Balcony
- ▶ Fenced in yard



3  
beds

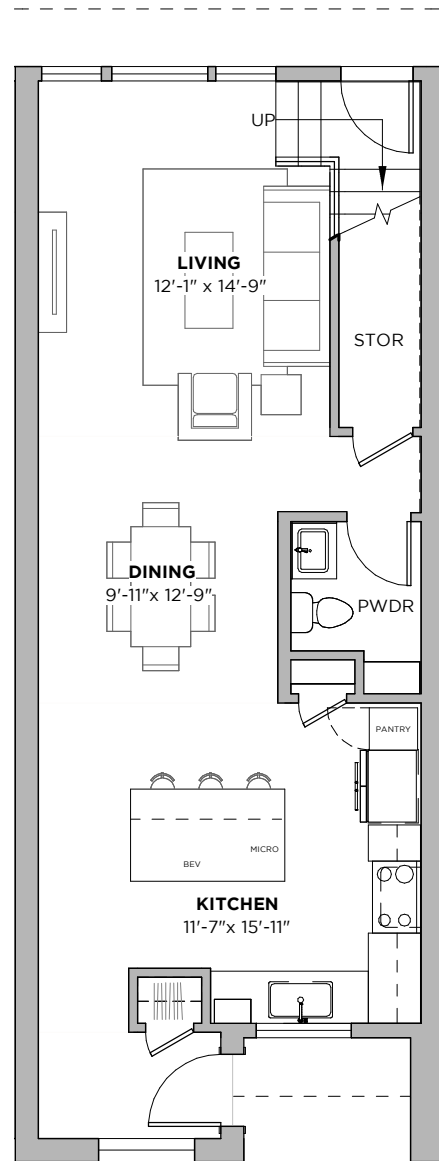


2.5  
baths

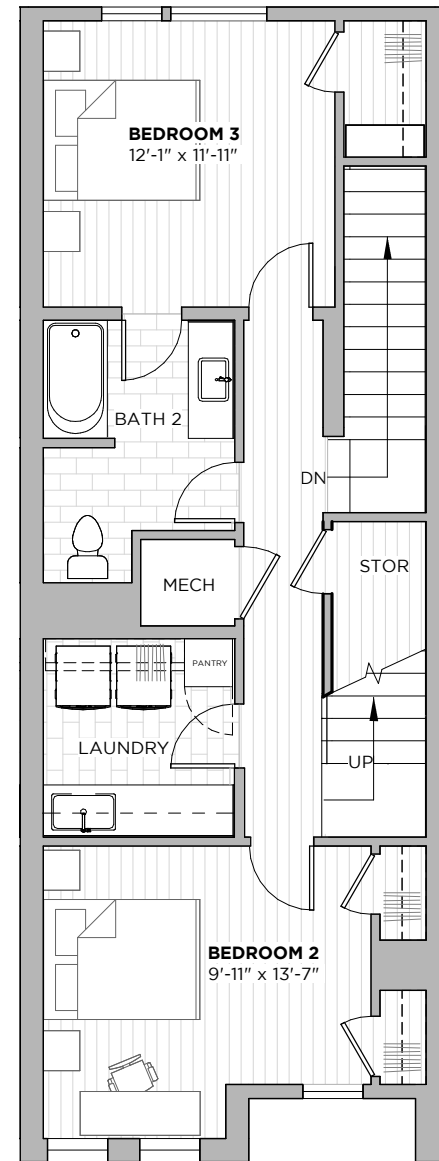


2152  
SF

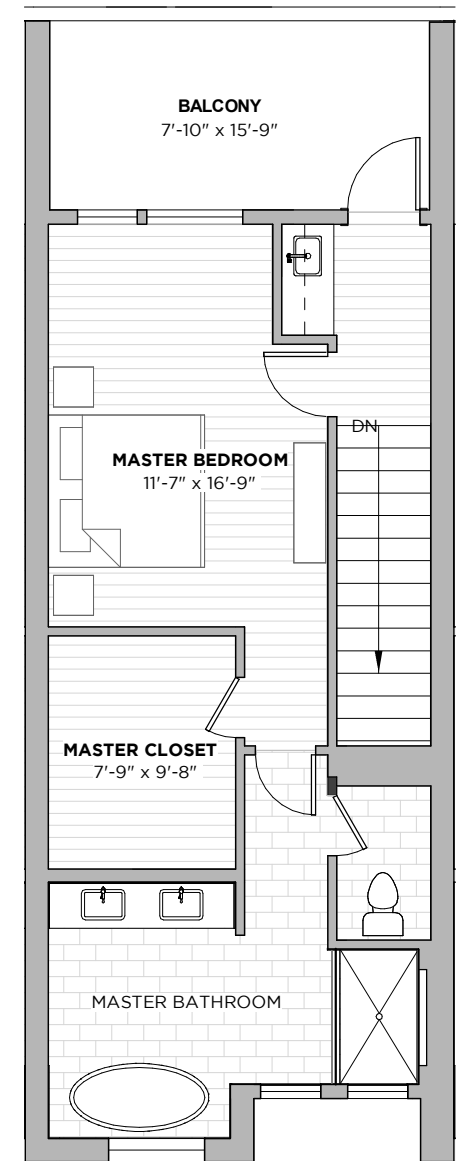
DECK/PATIO  
INFORMATION  
AVAILABLE PER UNIT



FIRST FLOOR



SECOND FLOOR



THIRD FLOOR



900 S. 2nd Street  
Austin, TX 78704

512-201-2700

